

INTRODUCTION

Thank you for purchasing the **Drill & Learn Toolbox™ Deluxe**.

Pretend to build or repair things with the drill, screwdriver, saw, hammer, wrench and screw plates while learning cool tool facts, numbers, colors, objects and more. Use the project cards, follow the instructions and pretend to repair different objects. The handle makes it easy to take the fun on the go!



- | | | |
|---------------------------|--------------------|-----------------|
| ① Toolbox | ⑧ Tool Buttons | ⑬ Saw |
| ② Screws | ⑨ Mode Selector | ⑭ Flashlight |
| ③ Card Slot | ⑩ Hammer | ⑮ Screwdriver |
| ④ Tray Holes | ⑪ Direction Switch | ⑯ Screw Plates |
| ⑤ Off/Volume Switch | ⑫ Drill | ⑰ Walkie-Talkie |
| ⑥ Nails | ⑬ Wrench | |
| ⑦ Electronic Project Tray | ⑭ Project Cards | |

INCLUDED IN THIS PACKAGE

- One **Drill & Learn Toolbox™ Deluxe**
- One electronic project tray
- One drill
- One hammer
- One wrench
- One saw
- One screwdriver
- One walkie-talkie
- One flashlight
- Five screws
- Four nails
- 14 screw plates
- Two double-sided cards
- One parent's guide

WARNING

All packing materials such as tape, plastic sheets, packaging locks, removable tags, cable ties and packaging screws are not part of this toy, and should be discarded for your child's safety.

NOTE

Please keep this parent's guide as it contains important information.

WARNING

Pour la sécurité de votre enfant, débarrassez-vous de tous les produits d'emballage tels que rubans adhésifs, feuilles de plastique, attaches, étiquettes et vis d'emballage. Ils ne font pas partie du jouet.

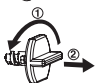
NOTE

Il est conseillé de conserver ce guide des parents car il comporte des informations importantes.

Unlock the Packaging Locks



1. Rotate the packaging lock 90 degrees counterclockwise.
2. Pull out the packaging lock and discard.



1. Turn the packaging lock counterclockwise several times.
2. Pull out the packaging lock and discard.

WARNING

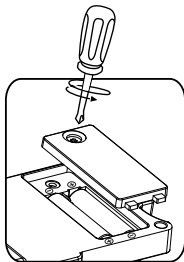
Do not insert anything other than the included **SCREWS** or **NAILS** into the **TRAY HOLES** of the **ELECTRONIC PROJECT TRAY**. Doing so may damage the **ELECTRONIC PROJECT TRAY**.



GETTING STARTED

Battery Removal and Installation

1. Make sure the unit is turned **Off**.
2. Find the battery cover located on the bottom of the unit, use a screwdriver to loosen the screw and open the battery cover.
3. Remove old batteries by pulling up on one end of each battery.
4. Install 2 new AA batteries following the diagram inside the battery box.
5. Replace the battery cover and tighten the screw to secure.



BATTERY NOTICE

- Use new alkaline batteries for maximum performance.
- Use only batteries of the same or equivalent type as recommended.
- Do not mix different types of batteries: alkaline, standard (carbon-zinc) or rechargeable (Ni-Cd, Ni-MH), or new and used batteries.
- Do not use damaged batteries.
- Insert batteries with the correct polarity.
- Do not short-circuit the battery terminals.
- Remove exhausted batteries from the toy.
- Remove batteries during long periods of non-use.
- Do not dispose of batteries in fire.
- Do not charge non-rechargeable batteries.
- Remove rechargeable batteries from the toy before charging (if removable).
- Rechargeable batteries are only to be charged under adult supervision.

ACTIVATING NORMAL PLAY MODE

When the product is taken out of the packaging, turn it on and insert a **Project Card**. You will hear a beep and a voice confirming you are in normal play mode.

PRODUCT FEATURES

1. Off/Volume Switch

To turn the unit **On** or adjust the volume, slide the **Off/Volume Switch** to Low or High. To turn the unit **Off**, slide the switch to **Off**.



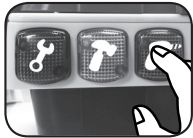
2. Mode Selector

Slide the **Mode Selector** to choose an activity. Choose from three activities.



3. Tool Buttons

Press the **Tool Buttons** to learn about the tools, their functions, hear fun sounds or answer questions.



4. Tray Holes

Drill the **Screws** or hammer the **Nails** into the **Tray Holes** to play or answer questions.



5. Double-Sided Project Cards

Insert either card into the **Card Slot** to play an activity.



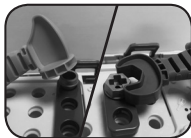
6. Drill

Use the **Drill** to drill **Screws** into the **Tray Holes**. The **Drill** can turn clockwise or counterclockwise by sliding the **Direction Switch** on the side.



7. Accessories

Place the **Screw Plates** on the **Tray** and align with the **Tray Holes**. Use the **Screwdriver**, **Hammer** or **Wrench** to insert the **Nails** or **Screws** into the **Tray Holes**. Use the role-play **Walkie-Talkie** to talk with friends or pretend to turn on the **Flashlight**.



8. Automatic Shut-Off

To prolong battery life, the **Drill & Learn Toolbox™ Deluxe** will shut off automatically after several minutes without input. The unit can be turned on again by sliding the **Off/Volume Switch** or sliding the **Mode Selector**.

The unit will also automatically turn off when the batteries are very low.

ACTIVITIES

1. Free Play Mode

Press the three **Tool Buttons** to learn about tools, sounds and colors. Use the **Drill**, **Hammer** or **Wrench** to drill **Screws** or hammer **Nails** into the **Tray Holes**. If no **Project Card** is inserted, you will hear sounds and phrases. If a **Project Card** is inserted into the **Card Slot**, drill the **Screws** or hammer the **Nails** into the **Tray Holes** to learn about numbers, more than or less than, colors, spelling, vehicles, objects and more.

After every five actions (drill a screw, hammer a nail, etc.), a reward song plays.

2. Quiz Mode

It's time to show off your fix-it skills! Listen to the questions and answer them by using the tools or pressing the **Tool Buttons**.

3. Music Mode

Press the **Tool Buttons** or insert a **Project Card** to hear songs about tools, numbers, colors and objects.

SONG LYRICS

Colors Card

Let's shout out colors, to the beat.
Red, yellow, white, pink and green,
I'm a super-duper fix-it machine.
Construction orange, purple, brown and blue,
Amazing color rhymes from me to you!

Numbers Card

One, two, grab a screw.
Three, four, drill some more.
Five, six, it's all fixed!
Seven, eight, nine, feeling fine!

Vehicles Card

Things that go fast and slow,
Need lots of care.
A patch here, a mend there,
All the fixing, we can share!

Housewares Card

Oh I love to fix everything!
I'm never without my toolbox.
No project is too big or too small,
Oh I love to fix everything.

Wrench Song

Righty tighty, lefty loosey,
I love my trusty wrench.
Righty tighty, lefty loosey,
It lives inside my tool bench!

Hammer Song

I need a nail and a hammer.
I need a hammer and a nail.
I have my tools and I'm on the fix-it trail!

Drill Song

We have a drill and a screw,
Whaddya want to do?
Let's build something for
Me and you!

CARE & MAINTENANCE

1. Keep the unit clean by wiping it with a slightly damp cloth.
2. Keep the unit out of direct sunlight and away from any direct heat source.
3. Remove the batteries when the unit is not in use for an extended period of time.
4. Do not drop the unit on hard surfaces and do not expose the unit to moisture or water.

TROUBLESHOOTING

If for some reason the unit stops working or malfunctions, please follow the following steps:

1. Turn the unit **Off**.
2. Interrupt the power supply by removing the batteries.
3. Let the unit stand for a few minutes, then replace the batteries.
4. Turn the unit **On**. The unit should now be ready to play again.
5. If the unit still does not work, replace with a set of new batteries.

IMPORTANT NOTE:

If the problem persists, please call our **Consumer Services Department** at **1-800-521-2010** in the U.S., **1-877-352-8697** in Canada, or visit our website **vtechkids.com** and fill out our **Contact Us** form located under the **Customer Support** link. Creating and developing VTech products is accompanied by a responsibility that we take very seriously. We make every effort to ensure the accuracy of the information, which forms the value of our products. However, errors sometimes can occur. It is important for you to know that we stand behind our products and encourage you to contact us with any problems and/or suggestions you might have. A service representative will be happy to help you.

CAUTION

Changes or modifications not expressly approved by the party responsible for compliance could void the user's authority to operate the equipment.

NOTE

This equipment has been tested and found to comply with the limits for a Class B digital device, pursuant to Part 15 of the FCC Rules. These limits are designed to provide reasonable protection against harmful interference in a residential installation. This equipment generates, uses and can radiate radio frequency energy and, if not installed and used in accordance with the instructions, may cause harmful interference to radio communications. However, there is no guarantee that interference will not occur in a particular installation. If this equipment does cause harmful interference to radio or television reception, which can be determined by turning the equipment off and on, the user is encouraged to try to correct the interference by one or more of the following measures:

- Reorient or relocate the receiving antenna.
- Increase the separation between the equipment and receiver.

- Connect the equipment into an outlet on a circuit different from that to which the receiver is connected.
- Consult the dealer or an experienced radio/TV technician for help.

**Supplier's Declaration of Conformity
47 CFR § 2.1077 Compliance Information**

Trade Name: VTech®
Model: 1782
Product Name: Drill & Learn Toolbox™ Deluxe
Responsible Party: VTech Electronics North America, LLC
Address: 1156 W. Shure Drive, Suite 200,
Arlington Heights, IL 60004
Website: vtechkids.com

THIS DEVICE COMPLIES WITH PART 15 OF THE FCC RULES. OPERATION IS SUBJECT TO THE FOLLOWING TWO CONDITIONS: (1) THIS DEVICE MAY NOT CAUSE HARMFUL INTERFERENCE, AND (2) THIS DEVICE MUST ACCEPT ANY INTERFERENCE RECEIVED, INCLUDING INTERFERENCE THAT MAY CAUSE UNDESIRE OPERATION.

CAN ICES-3 (B)/NMB-3(B)

**CLASS 1
LED PRODUCT**

**Visit our website for more
information about our products,
downloads, resources and more.**

vtechkids.com

Read our complete warranty policy online at
vtechkids.com/warranty



TM & © 2016 VTech Holdings Limited.
All rights reserved.
Printed in China.
91-003209-021 